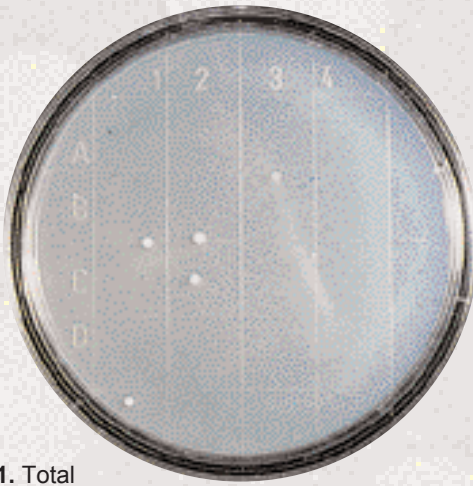


# ENVIRONMENT

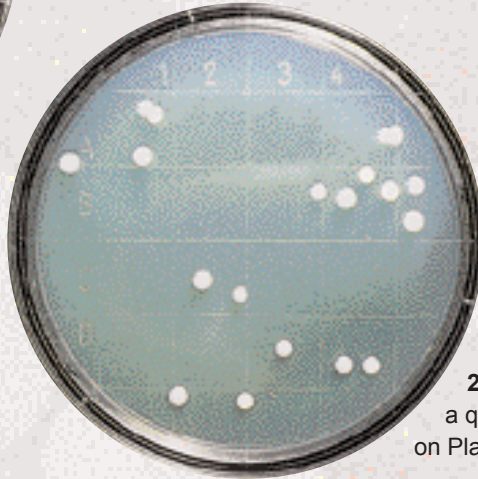
# MONITORING



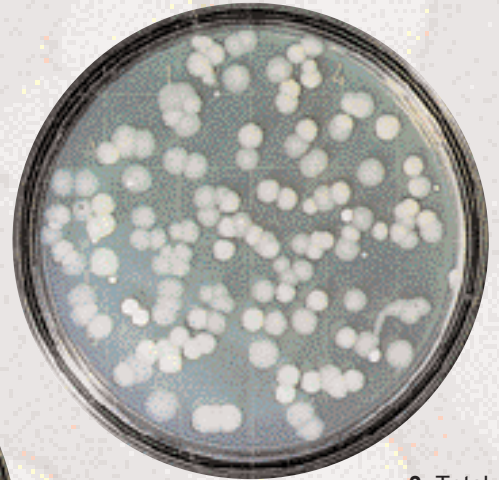
SAS SUPER 100



1. Total viable count of a clean surface on Plate Count Agar



2. Total viable count of a questionable surface on Plate Count Agar

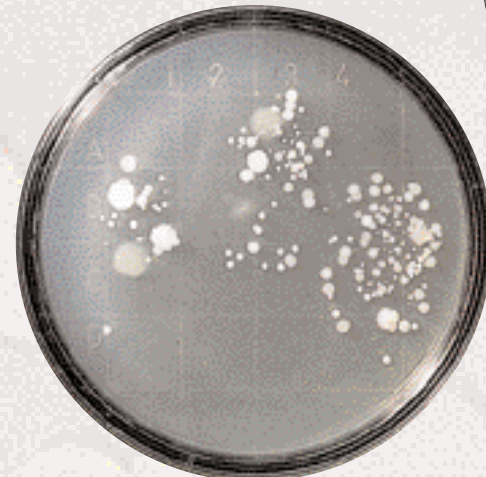
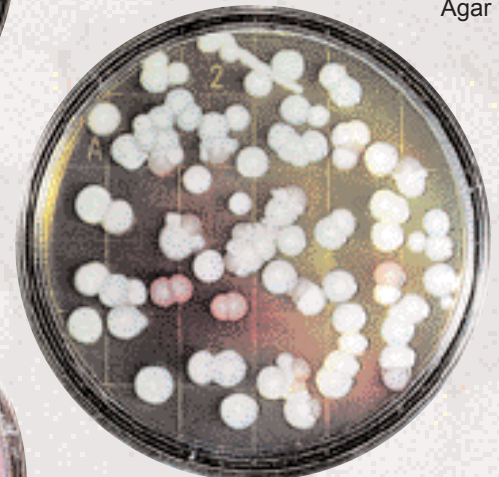


3. Total viable count of an unacceptable surface on Plate Count Agar

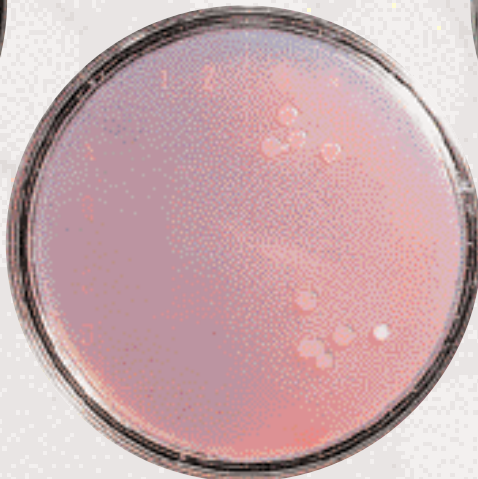
5. Black colonies with halo of *Staphylococcus aureus* and black colonies of harmless *Staphylococci* on tellurite Pyruvate Glicine Egg Yolk medium



6. Few pink colonies of *Salmonella spp* surrounded by many white-yellowish colonies of coliform on Brilliant Green Agar

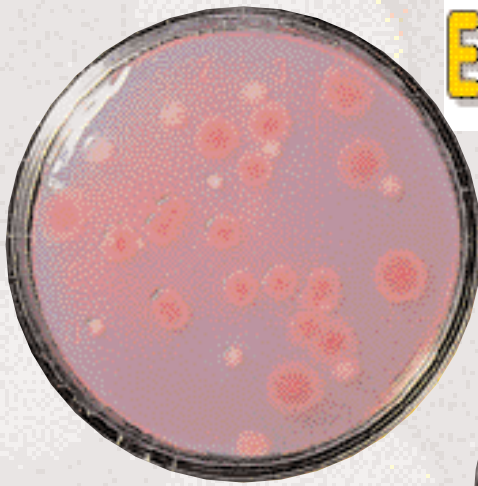


4. Normal resident microbial population of hands

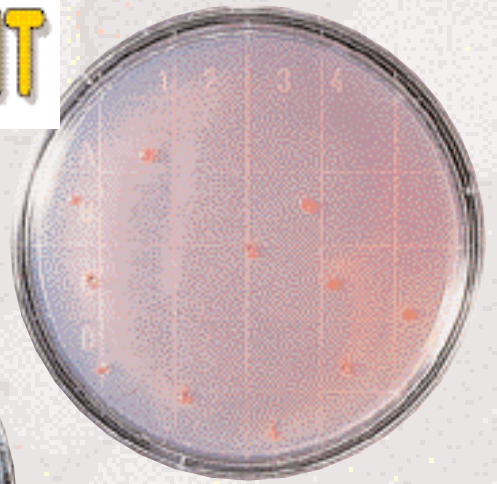


7. Typical bright red colonies of *Escherichia coli* on Violet Red Bile Agar

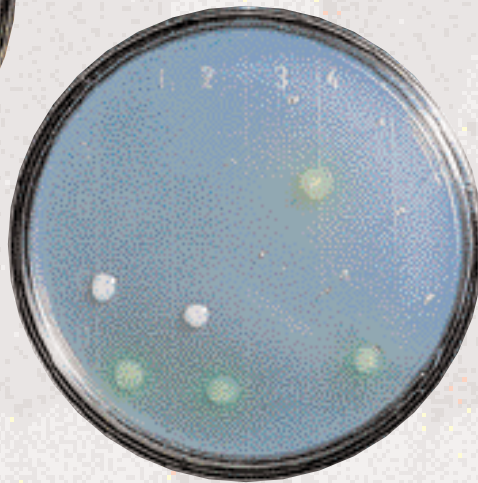
# ENVIRONMENT



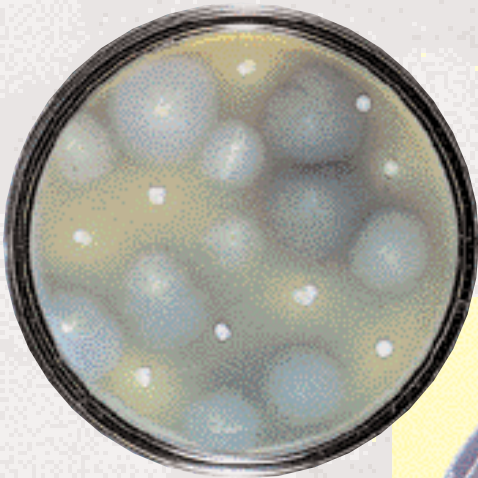
8. Reddish, mucoid colonies of *Enterobacter* and light, small pink colonies of *Serratia* on McConkey agar



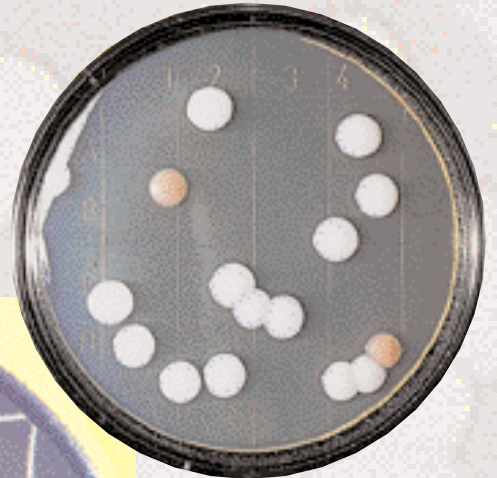
10. Colonies with dark pink center of *Yersinia* spp on Cefsulodin Irgasan Novobiocin Agar



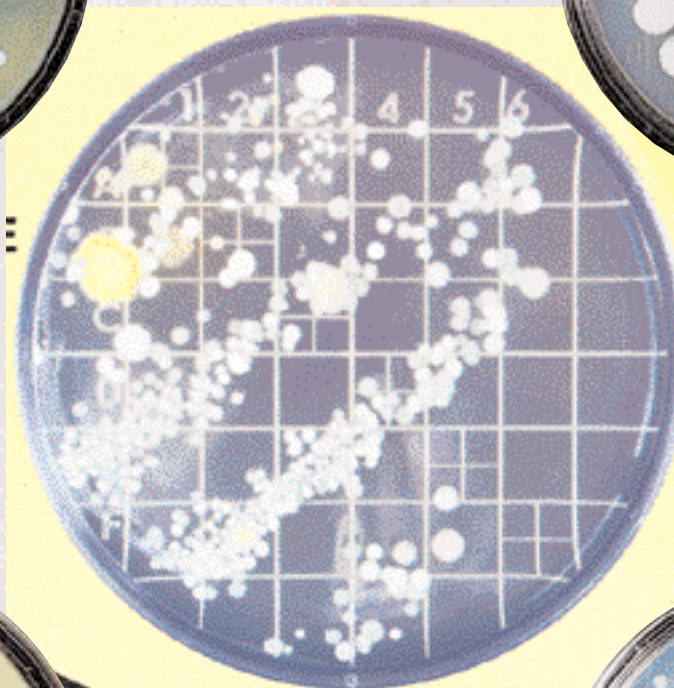
9. Green pigmented colonies of *Pseudomonas aeruginosa* on Cetrimide agar



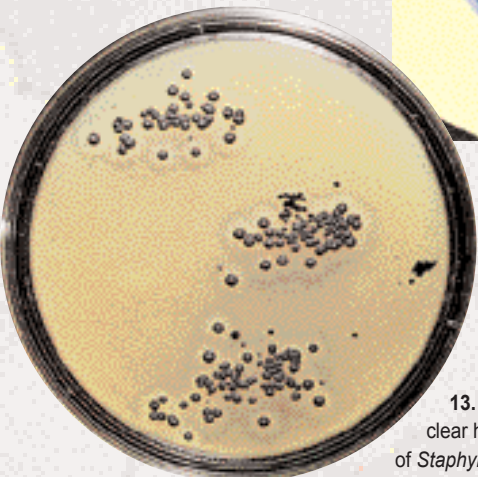
11. Blue background around colonies of *Bacillus cereus* on Holbrook and Anderson media (with polymyxin)



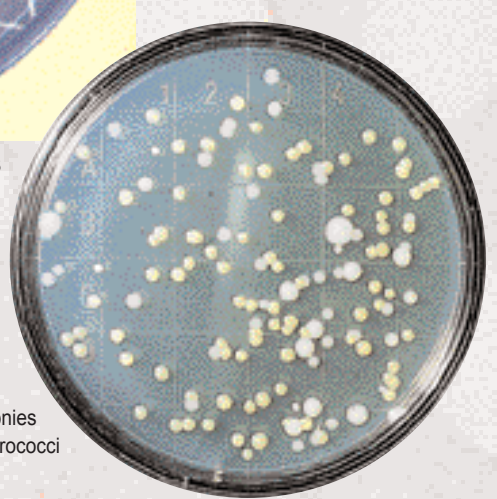
12. Large and creamy colonies of yeast on Oxytetracycline Glucose Yeast Extract Agar



Printing of fingers on "Maxi-contact" plates



13. Black centred, clear halo colonies of *Staphylococcus aureus* on Baird-Parker agar



14. Bright yellow colonies of micrococci